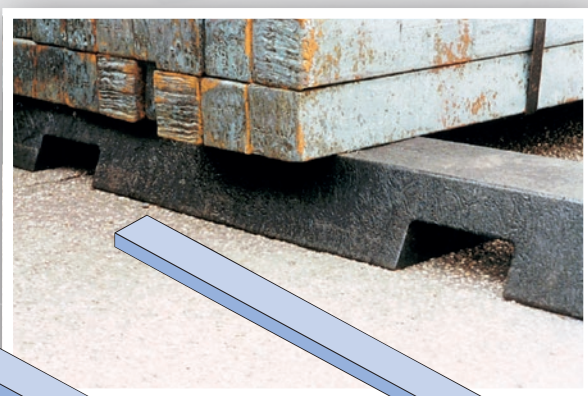


KLP® Storagebeams

For an ideal storage of your (slit)coils and heavy machine parts



Have you ever wondered how many cubic meters of wood are used and transported within your company each year? For many years Lankhorst Mouldings have developed plastic beams with a large variety in design and dimensions. Plastic beams provide an excellent alternative for wood: plastic has a much longer lifetime and it is moisture-free, splinter free and oil resistant.



KLP® Storagebeams have especially been developed for a safe and simple storage of coils, slit coils, rollers, presses and other heavy machine parts. The square or rectangular Storagebeams can carry a lot of weight; they can easily support machine parts with a weight up to 100 tons. KLP® Storagebeams are available in various designs:

Standard KLP® Storagebeams

7.5 x 7.5 x 250 cm	8.0 x 8.0 x 200 cm
10.0 x 10.0 x 200 cm	12.0 x 12.0 x 360 cm
10.0 x 10.0 x 250 cm	15.0 x 25.0 x 260 cm
10.0 x 10.0 x 300 cm	15.0 x 7.0 x 250 cm
10.0 x 20.0 x 400 cm	16.0 x 8.0 x 360 cm
10.0 x 5.0 x 200 cm	20.0 x 7.0 x 180 cm

KLP® Coilwedges

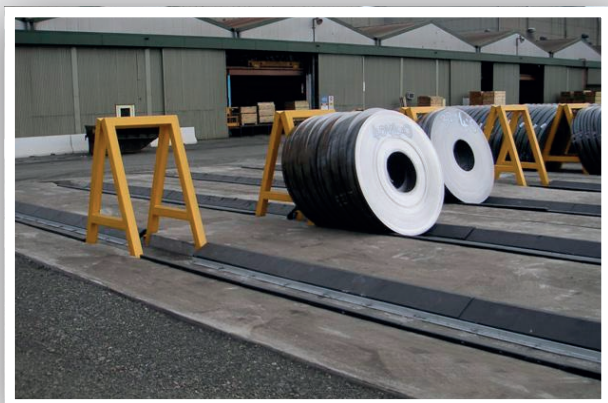
For safe storage of your (slit)coils



KLP® Coilwedges are shaped beams with an angle of 30°. These Coilwedges were specifically designed for the storage of slit coils.

Available lengths: 100, 120, 150 and 170 cm.

KLP® Coilwedges must be placed into a metal frame.



Why use KLP® products in your warehouse?

- Moisture resistant, no corrosion
- Oil resistant
- Less damage to your products
- Splinter free
- Extreme long lifetime
- Large bearing surface, enormous load bearing capacity
- Safety

Type	Length (mm)	Width (mm)	Chock angle (°)	Maximum load (tons)
100 x 25	1000	250	30	50
120 x 25	1200	250	30	50
150 x 25	1500	250	30	50
170 x 25	1700	250	30	50
150 x 30	1500	300	21	50